

A new life awaits you at TreeTops apartment homes.

Nestled in the heart of West Shreveport, TreeTops is conveniently located to all Shreveport has to offer, and boasts easy access to I-20, I-220, the 3132 Inner Loop and Pines Road. Arriving home through the access gates, you'll delight in the community's comfort, practicality and affordability. Here, spacious grounds and appealing architecture are accented by well-manicured landscaping, framed by mature trees in a natural, wooded setting.



Professionally Managed By:



Welcome to



Apartment Interior Features

- Spacious 1, 2 & 3 Bedrooms
- Open Floor Plans
- Wall-to-Wall Carpet
- Washer & Dryer Connections Available
- Fireplaces Available
- Garbage Disposals
- Large Closets
- Balconies and Patios

Exterior Features

- On-site Laundry Facility
- Basketball Court
- Sparkling Swimming Pool
- Gated Access
- Courtesy Officer
- 24-hour Emergency Maintenance
- Water, Sewerage & Trash Paid
- Cable Ready
- Small pets welcome

Floor Plan Types:

1,2 and 3 Bedroom Apartment Homes

1 bdrm, 1 bath

2 bdrms, 1 bath

2 bdrms, 2 baths

3 bdrms, 2 baths

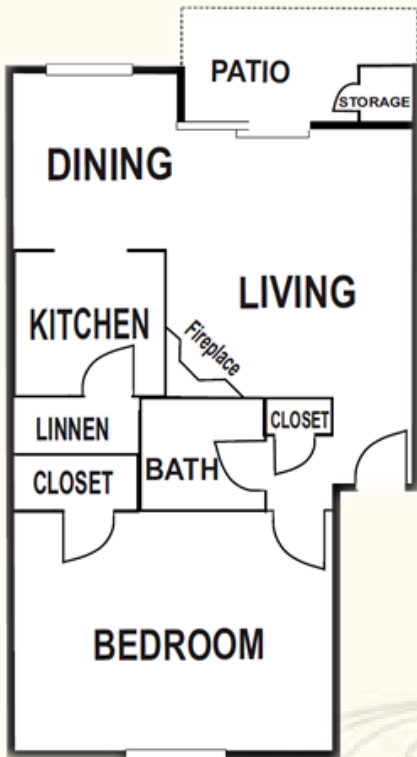
6800 Raspberry Lane

Shreveport, LA 71129

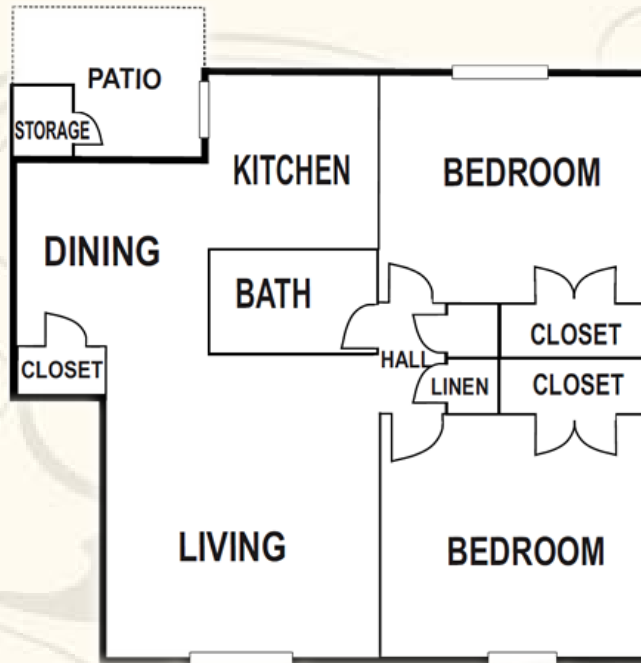
Phone (318) 687-0781

Fax (318) 687-0782

treetopsshreveport.com



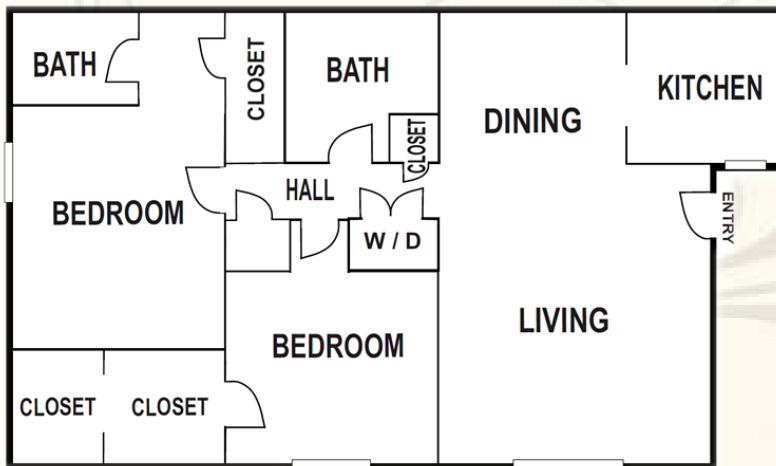
1 Bedroom / 1 Bath
719 Sq. Ft.



2 Bedroom / 1 Bath
909 Sq. Ft.



3 Bedroom / 2 Baths
1244 Sq. Ft.



2 Bedroom / 2 Baths
1026 Sq. Ft.

